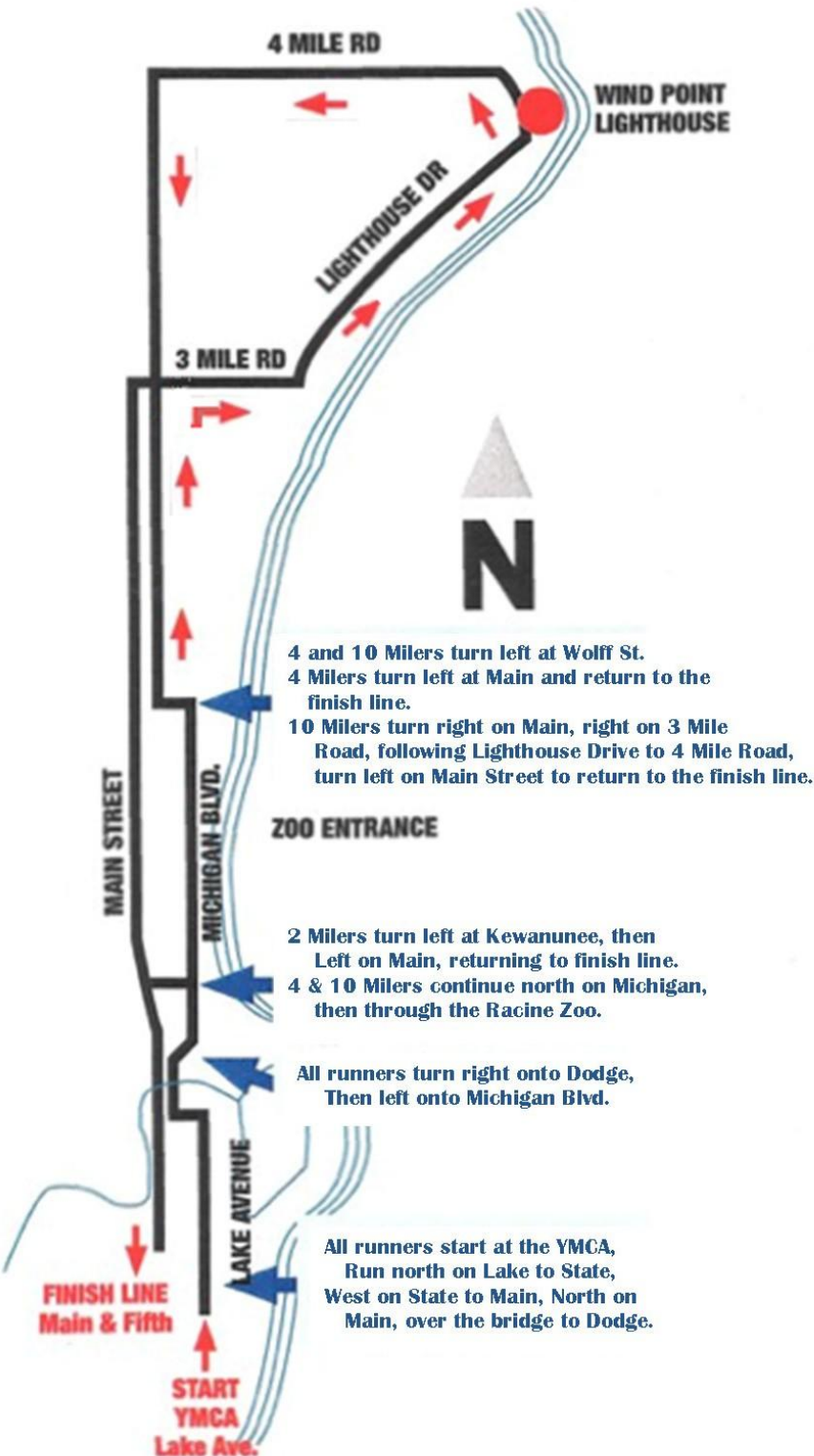




Click for  
printable map

# Course Map



The Lighthouse Run begins on Lake Avenue at the Racine Family YMCA and heads north towards the Root River. Runners cross the river on Main Street before turning to run along Lake Michigan on Michigan Blvd. The 2 milers turn back on Kewaunee Street, while 4 & 10 Mile participants proceed through the Racine Zoo. After exiting the zoo, runners head one block north and turn left on Wolff Ave.

4 milers turn left and head back along Main Street to the finish line, while LHR 10 milers turn right and proceed north to the 3 Mile Road.

The LHR 10M runners head east on Lighthouse Drive past the famous Wind Point Lighthouse to the 4 Mile Road. Runners should stay on the outside lane. Runners then head west on 4 Mile Road to Main Street. The final leg of the race is back down Main Street to the finish on Monument Square Runners should stay on the inside lane at this point.

Runners in the 4 & 10 Mile Competitive Runs will be issued a race number to which a MYLAPS Bib Tag will be attached and which must be worn to be timed. No dogs or roller blades are allowed in any run! Strollers and wagons are allowed in the Modine Fun Run/Walk, however they ARE NOT permitted in the LHR 4 & 10 mile competitive races.

The course will close at 10:30am.

### Water Stops and Port-a-potties:

- Dodge Street – On a Whim (all legs)
- 1828 Michigan Blvd. (4 & 10 milers)
- Wolff & Main (4 & 10 milers)
- 2811 N. Main (10 milers)
- Johnson Bank –3 & Main (10 milers) & a port-a-potty
- Windpoint Lighthouse (10 milers)
- Village Green (10 Milers) also a port-a-potty
- 201 4 Mile (10 milers)
- 4921 N. Main (10 Milers)
- Zoo on Main Street (4 & 10 milers)
- Tennis courts south of Goad – port-a-potty
- 1627 N. Main (4 & 10 Milers)

Vote for your most memorable waterstop!! Write the waterstop on one of your bib tabs and drop into a ballot box. Boxes are at: fruit/water station, sponsor stations, mascot tent, beer tent, results and 4 & 10 mile awards tents.